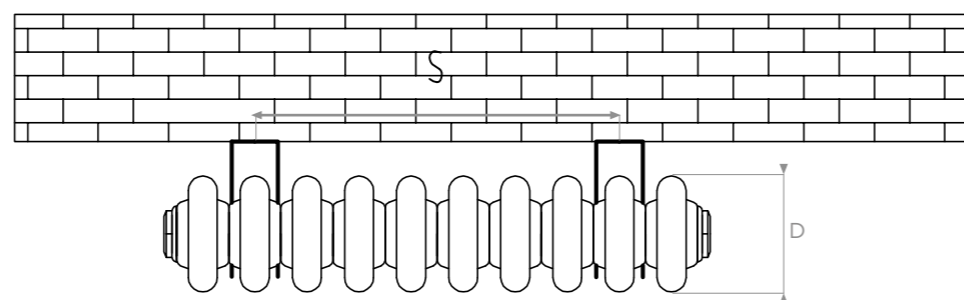
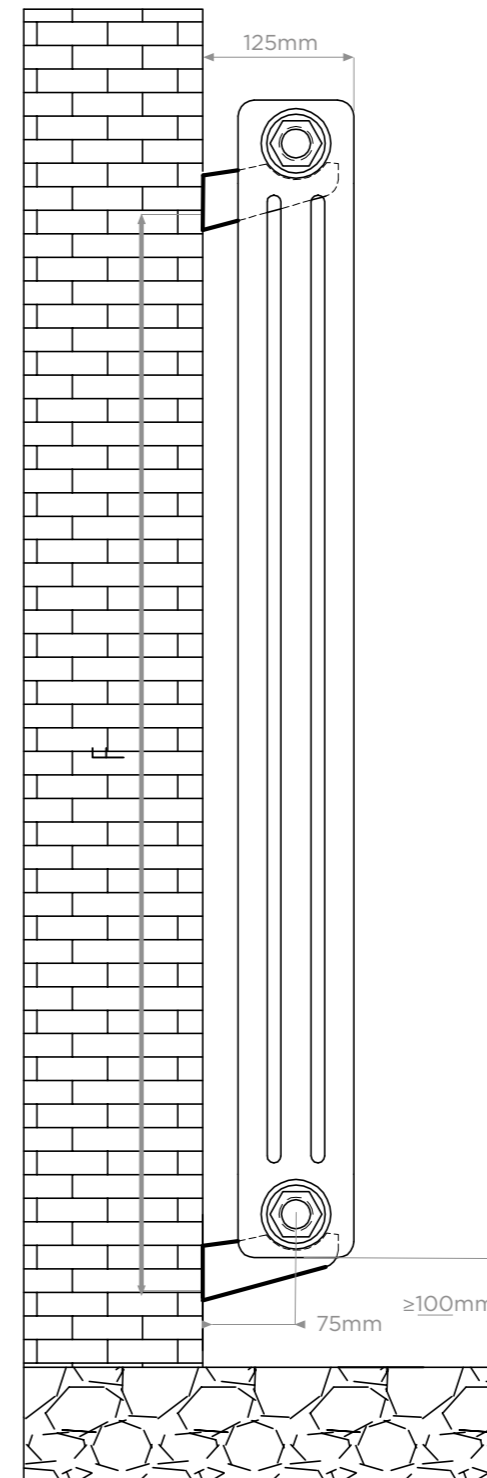
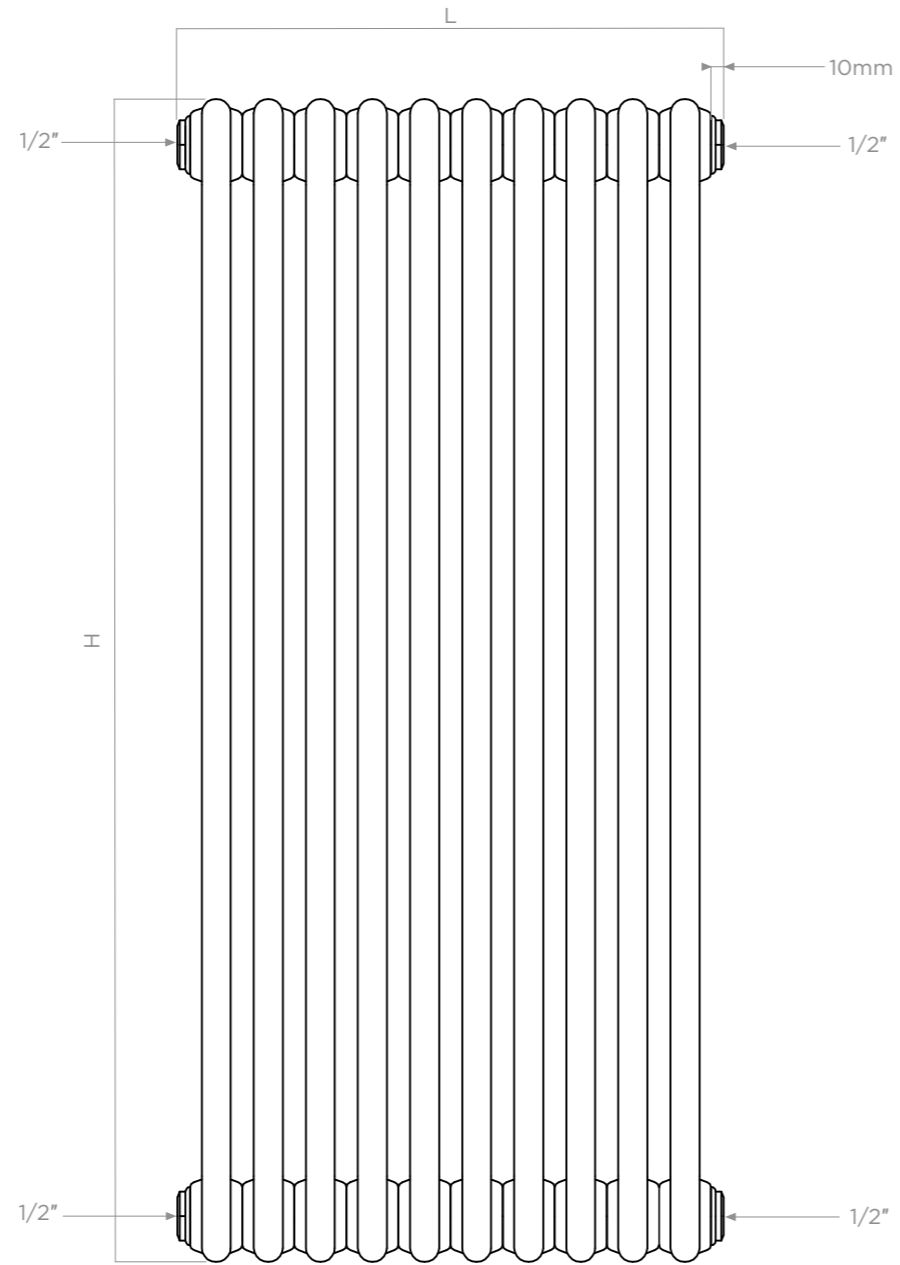
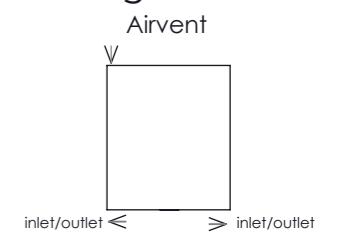


ALL MEASUREMENTS ARE IN MILLIMETRES MANUFACTURED FROM MILD STEEL



All Dimensions are in mm
 Max. Working Pressure: 6 Bar
 Max. Working Temperature: 95° C
 Inlet / Outlet : 1/2" BSP
 Fuel Type: H

Fitting Position:



| PRODUCT CODE | HEIGHT (H) | LENGTH (L) | DEPTH (D) | PIPE CENTRES (C) | BRACKET CENTRES | |
|--------------|------------|------------|-----------|------------------|-----------------|------|
| | mm | mm | mm | | F | S |
| | mm | mm | mm | mm | mm | mm |
| C3030919 | 300 | 864 | 100 | 954 | 225 | 664 |
| C3031125 | 300 | 1130 | 100 | 1220 | 225 | 842 |
| C3031432 | 300 | 1440 | 100 | 1530 | 225 | 1152 |
| C3031636 | 300 | 1617 | 100 | 1707 | 225 | 1329 |
| C3040409 | 400 | 421 | 100 | 511 | 325 | 221 |
| C3040613 | 400 | 598 | 100 | 688 | 325 | 398 |
| C3040716 | 400 | 731 | 100 | 821 | 325 | 531 |
| C3040919 | 400 | 864 | 100 | 954 | 325 | 664 |
| C3040922 | 400 | 997 | 100 | 1087 | 325 | 709 |
| C3041125 | 400 | 1130 | 100 | 1220 | 325 | 842 |
| C3041432 | 400 | 1440 | 100 | 1530 | 325 | 1152 |
| C3041636 | 400 | 1617 | 100 | 1707 | 325 | 1329 |
| C3041640 | 400 | 1794 | 100 | 1884 | 325 | 1506 |
| C3050409 | 500 | 421 | 100 | 511 | 425 | 221 |
| C3050613 | 500 | 598 | 100 | 688 | 425 | 398 |
| C3050716 | 500 | 731 | 100 | 821 | 425 | 531 |
| C3050919 | 500 | 864 | 100 | 954 | 425 | 664 |
| C3050922 | 500 | 997 | 100 | 1087 | 425 | 709 |
| C3051125 | 500 | 1130 | 100 | 1220 | 425 | 842 |
| C3051432 | 500 | 1440 | 100 | 1530 | 425 | 1152 |
| C3051636 | 500 | 1617 | 100 | 1707 | 425 | 1329 |
| C3051640 | 500 | 1794 | 100 | 1884 | 425 | 1506 |
| C3060306 | 600 | 288 | 100 | 378 | 525 | 88 |
| C3060408 | 600 | 377 | 100 | 467 | 525 | 176 |
| C3060409 | 600 | 421 | 100 | 511 | 525 | 221 |
| C3060613 | 600 | 598 | 100 | 688 | 525 | 398 |
| C3060716 | 600 | 731 | 100 | 821 | 525 | 531 |

| PRODUCT CODE | HEIGHT (H) | LENGTH (L) | DEPTH (D) | PIPE CENTRES (C) | BRACKET CENTRES | |
|--------------|------------|------------|-----------|------------------|-----------------|------|
| | mm | mm | mm | | F | S |
| | mm | mm | mm | mm | mm | mm |
| C3060919 | 600 | 864 | 100 | 954 | 525 | 664 |
| C3060922 | 600 | 997 | 100 | 1087 | 525 | 709 |
| C3061125 | 600 | 1130 | 100 | 1220 | 525 | 842 |
| C3061432 | 600 | 1440 | 100 | 1530 | 525 | 1152 |
| C3061636 | 600 | 1617 | 100 | 1707 | 525 | 1329 |
| C3061640 | 600 | 1794 | 100 | 1884 | 525 | 1506 |
| C3070306 | 750 | 288 | 100 | 378 | 675 | 88 |
| C3070408 | 750 | 377 | 100 | 467 | 675 | 176 |
| C3070409 | 750 | 421 | 100 | 511 | 675 | 221 |
| C3070613 | 750 | 598 | 100 | 688 | 675 | 398 |
| C3070716 | 750 | 731 | 100 | 821 | 675 | 531 |
| C3070919 | 750 | 864 | 100 | 954 | 675 | 664 |
| C3070922 | 750 | 997 | 100 | 1087 | 675 | 709 |
| C3071125 | 750 | 1130 | 100 | 1220 | 675 | 842 |
| C3071432 | 750 | 1440 | 100 | 1530 | 675 | 1152 |
| C3071636 | 750 | 1617 | 100 | 1707 | 675 | 1329 |
| C3180306 | 1800 | 288 | 100 | 378 | 1725 | 88 |
| C3180408 | 1800 | 377 | 100 | 467 | 1725 | 176 |
| C3180409 | 1800 | 421 | 100 | 511 | 1725 | 221 |
| C3180510 | 1800 | 465 | 100 | 555 | 1725 | 265 |
| C3180613 | 1800 | 598 | 100 | 688 | 1725 | 398 |
| C3200306 | 2000 | 288 | 100 | 378 | 1925 | 88 |
| C3200408 | 2000 | 377 | 100 | 467 | 1925 | 176 |
| C3200409 | 2000 | 421 | 100 | 511 | 1925 | 221 |
| C3200510 | 2000 | 465 | 100 | 555 | 1925 | 265 |
| C3200613 | 2000 | 598 | 100 | 688 | 1925 | 398 |