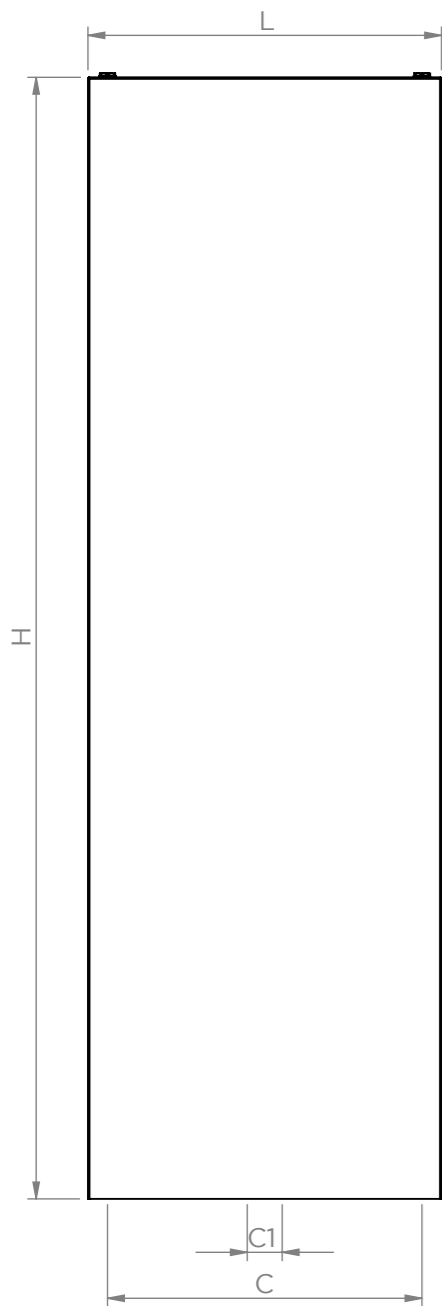
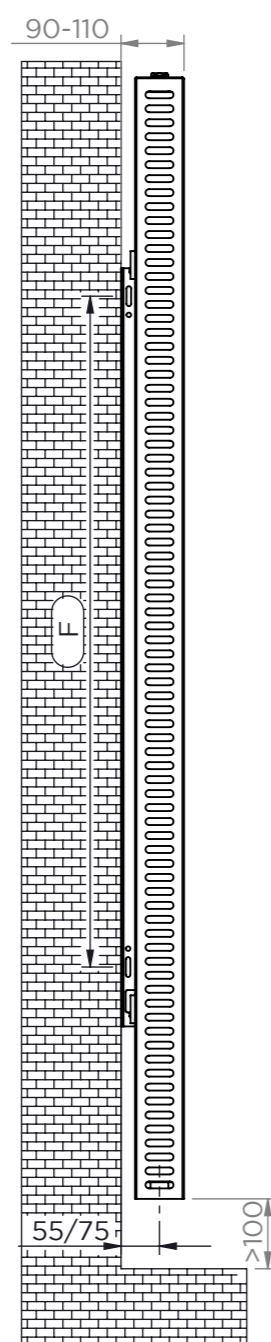


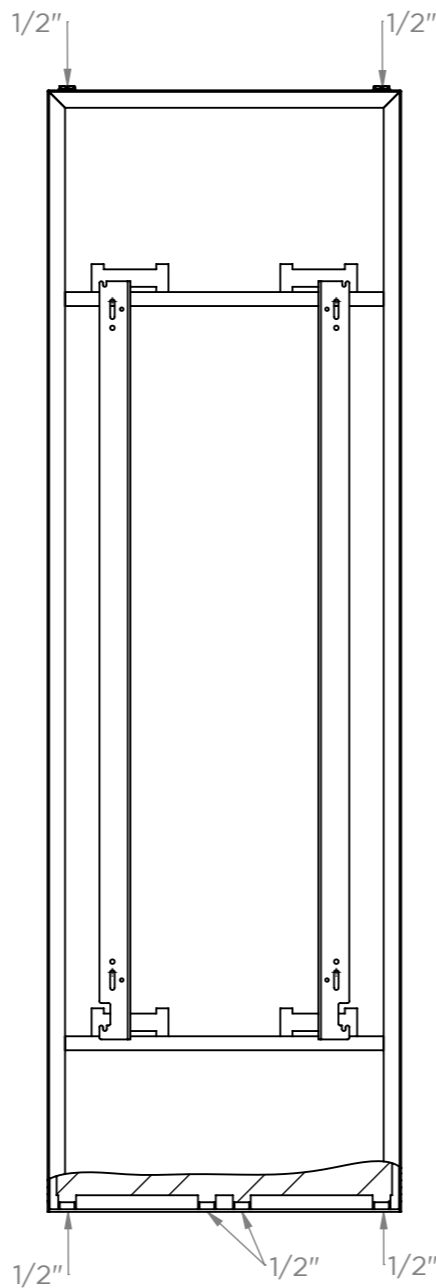
ALL MEASUREMENTS ARE IN MILLIMETRES MANUFACTURED FROM MILD STEEL



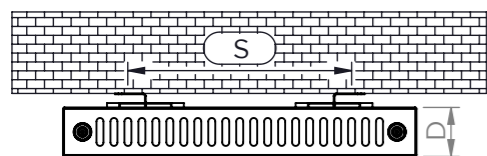
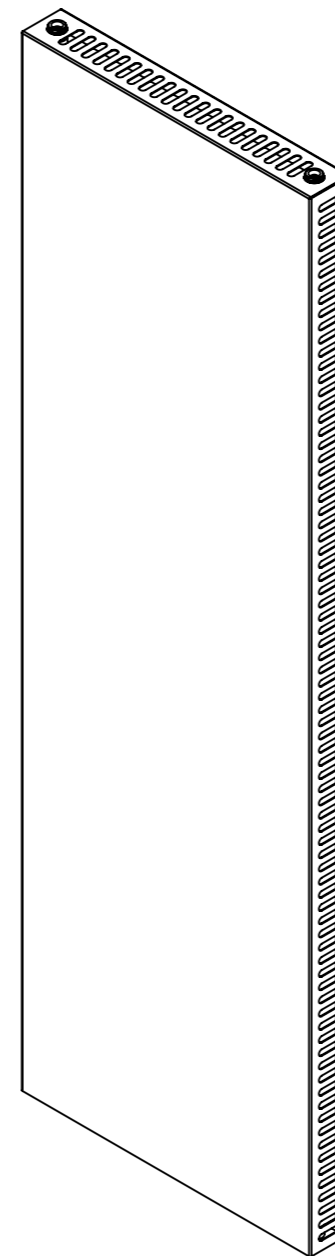
Front View



Side View

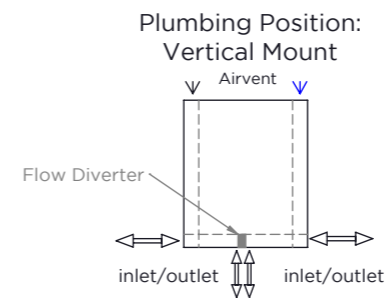
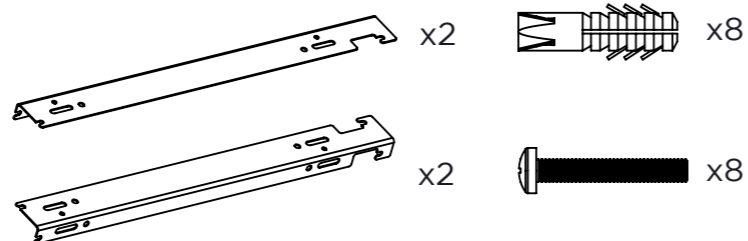


Back View



Top View

Installation Accessories:



All Dimensions are in mm
 Max. Working Pressure: 10 Bar
 Max. Working Temperature: 95° C
 Inlet / Outlet : 1/2" BSP
 Fuel Type: E/H/D

When mounting vertically, please observe that the collector fitted with a flow diverter is mounted at the bottom. This can be verified by visually checking or by referring to the installation diagram

PRODUCT CODE	HEIGHT (H)	LENGTH (L)	DEPTH (D)	PIPE CENTRES (C)
	mm	mm	mm	mm
SOVD164v	1605	405	72	50-350
SOVD165v	1605	505	72	50-450
SOVD166v	1605	605	72	50-550
SOVD167v	1605	705	72	50-650
SOVD182v	1805	205	72	50-150
SOVD183v	1805	305	72	50-250
SOVD184v	1805	405	72	50-350
SOVD185v	1805	505	72	50-450
SOVD186v	1805	605	72	50-550
SOVD187v	1805	705	72	50-650
SOVD202v	2005	205	72	50-150
SOVD203v	2005	305	72	50-250
SOVD204v	2005	405	72	50-350
SOVD205v	2005	505	72	50-450
SOVD206v	2005	605	72	50-550
SOVD207v	2005	705	72	50-650
SOVS185v	1805	505	52	50-450
SOVS186v	1805	605	52	50-550
SOVS187v	1805	705	52	50-650
SOVS204v	2005	405	52	50-350
SOVS205v	2005	505	52	50-450
SOVS206v	2005	605	52	50-550
SOVS207v	2005	705	52	50-650