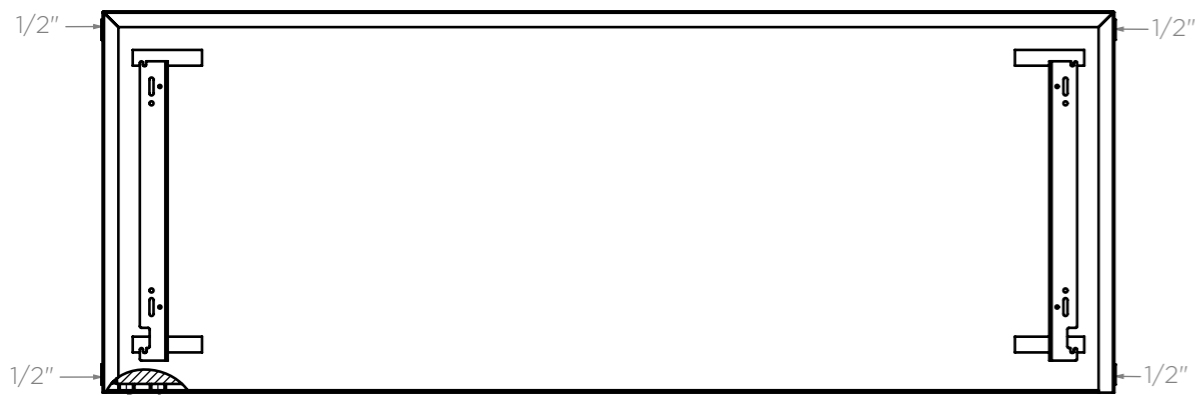
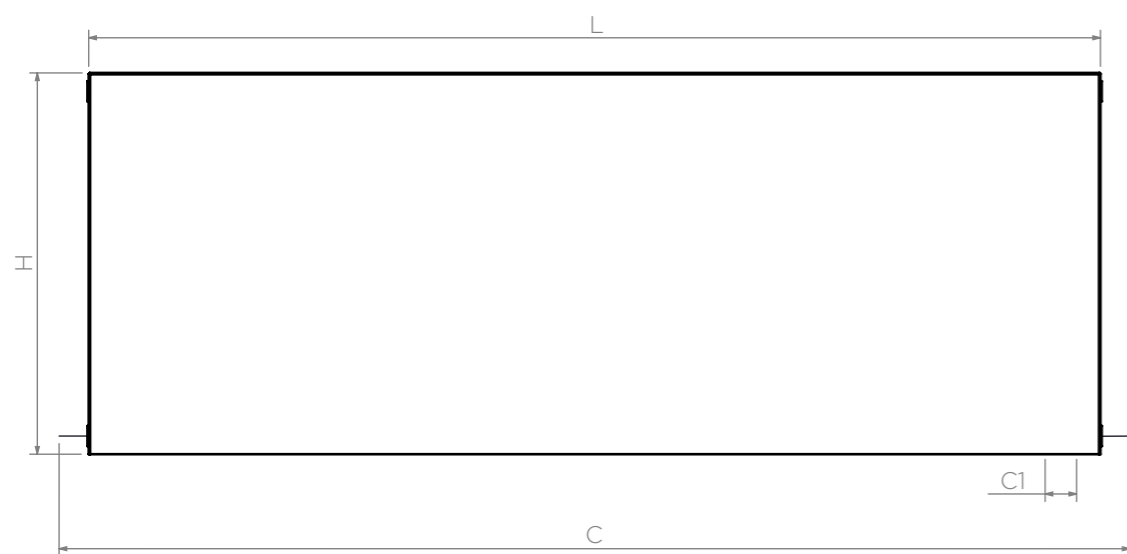


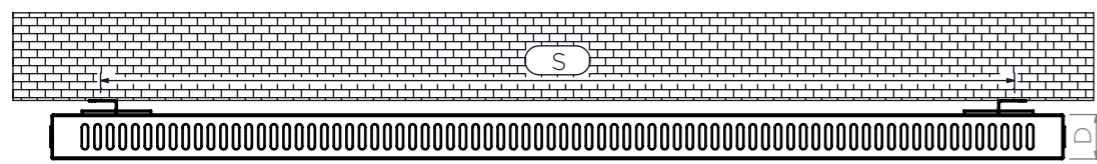
ALL MEASUREMENTS ARE IN MILLIMETRES | MANUFACTURED FROM MILD STEEL



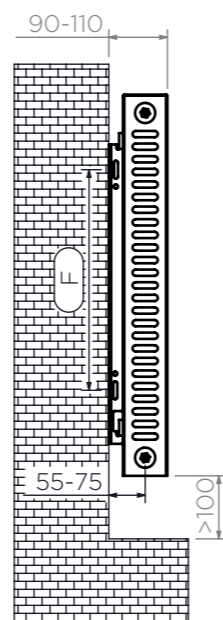
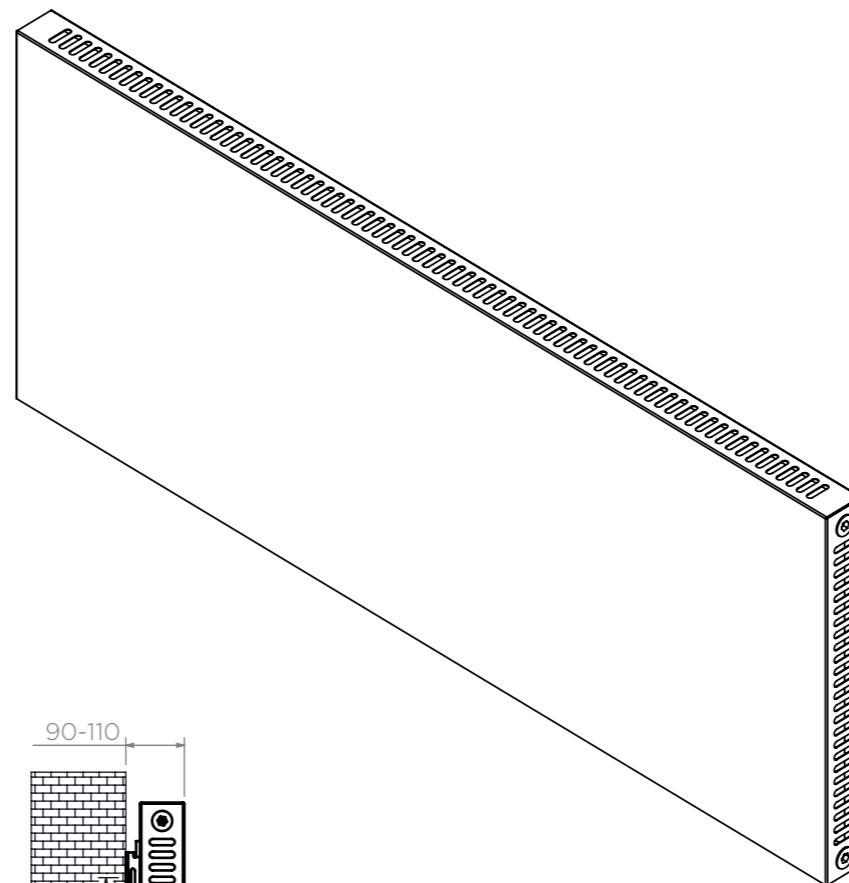
Back View



Front View

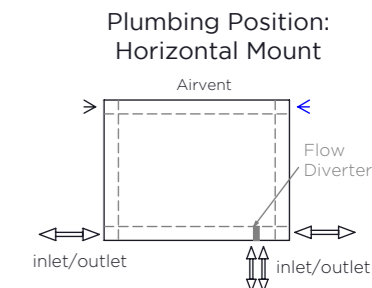
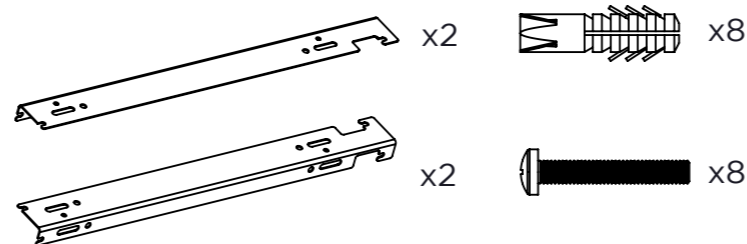


Top View



Side View

Installation Accessories:



All Dimensions are in mm
 Max. Working Pressure: 10 Bar
 Max. Working Temperature: 95° C
 Inlet / Outlet : 1/2" BSP
 Fuel Type: H

When mounting vertically, please observe that the collector fitted with a flow diverter is mounted at the bottom. This can be verified by visually checking or by referring to the installation diagram

PRODUCT CODE	HEIGHT (H)	LENGTH (L)	DEPTH (D)	PIPE CENTRES (C)
	mm			
SOVD604h	605	405	72	50-495
SOVD605h	605	505	72	50-595
SOVD606h	605	605	72	50-695
SOVD607h	605	705	72	50-795
SOVD608h	605	805	72	50-895
SOVD609h	605	905	72	50-995
SOVD610h	605	1005	72	50-1095
SOVD611h	605	1105	72	50-1195
SOVD612h	605	1205	72	50-1295
SOVD614h	605	1405	72	50-1495
SOVD616h	605	1605	72	50-1695
SOVD618h	605	1805	72	50-1895
SOVD620h	605	2005	72	50-2095