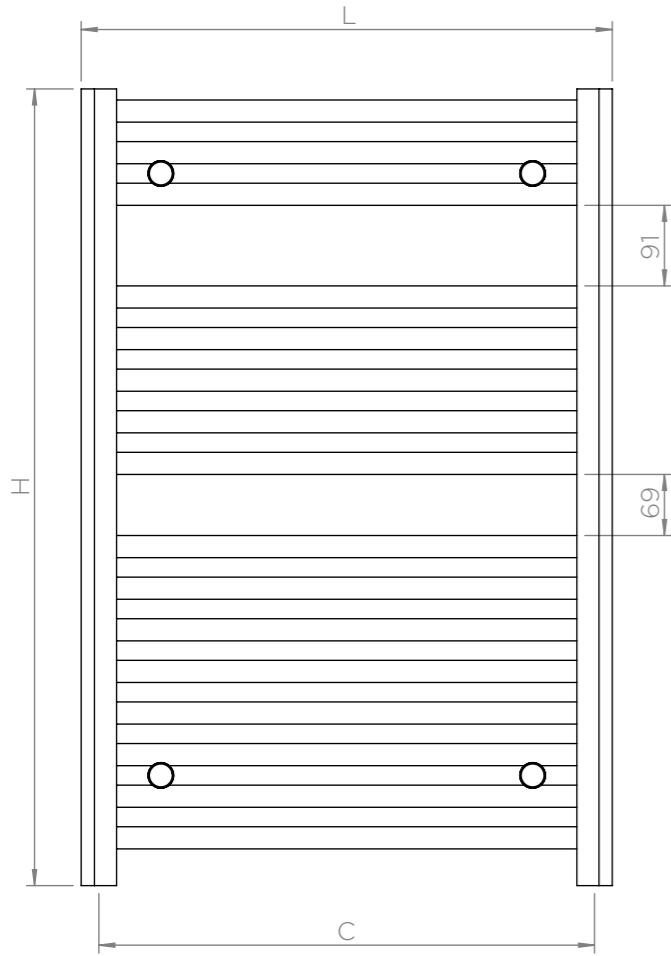
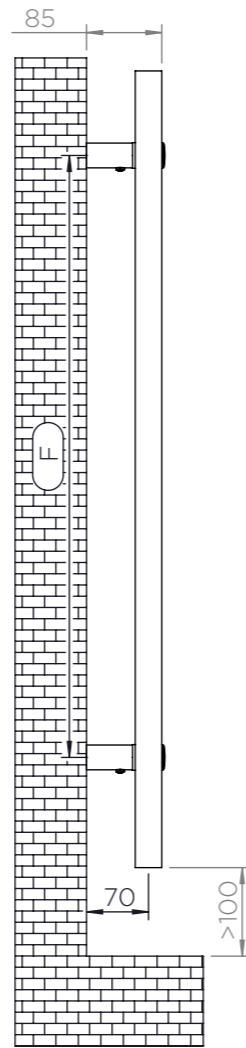


ALL MEASUREMENTS ARE IN MILLIMETRES | MANUFACTURED FROM MILD STEEL

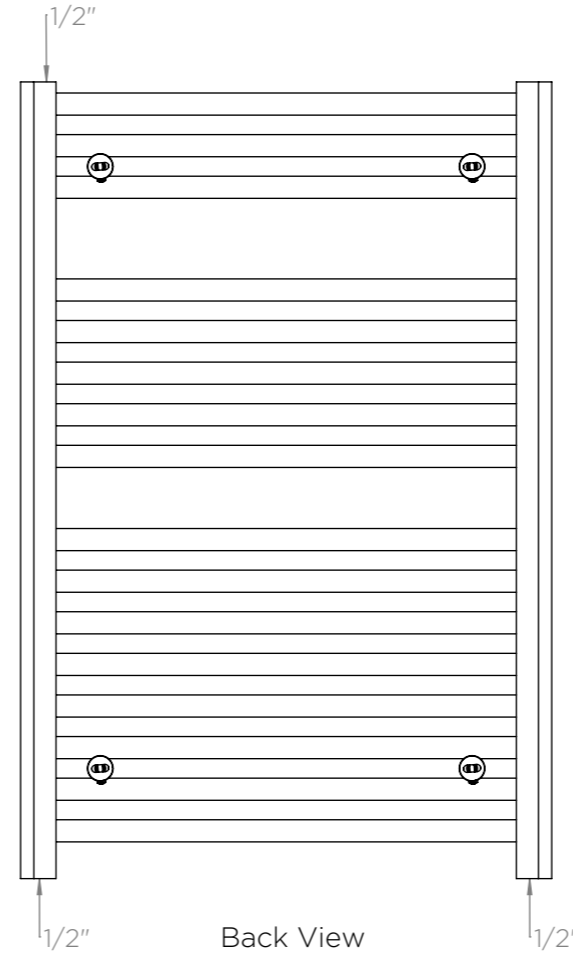
## 4M9, 5M9, 6M9



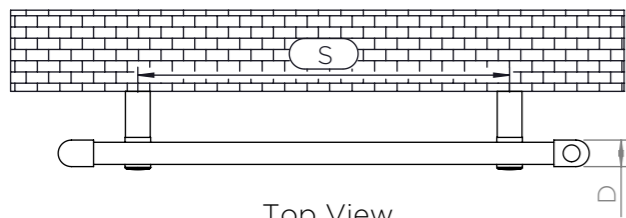
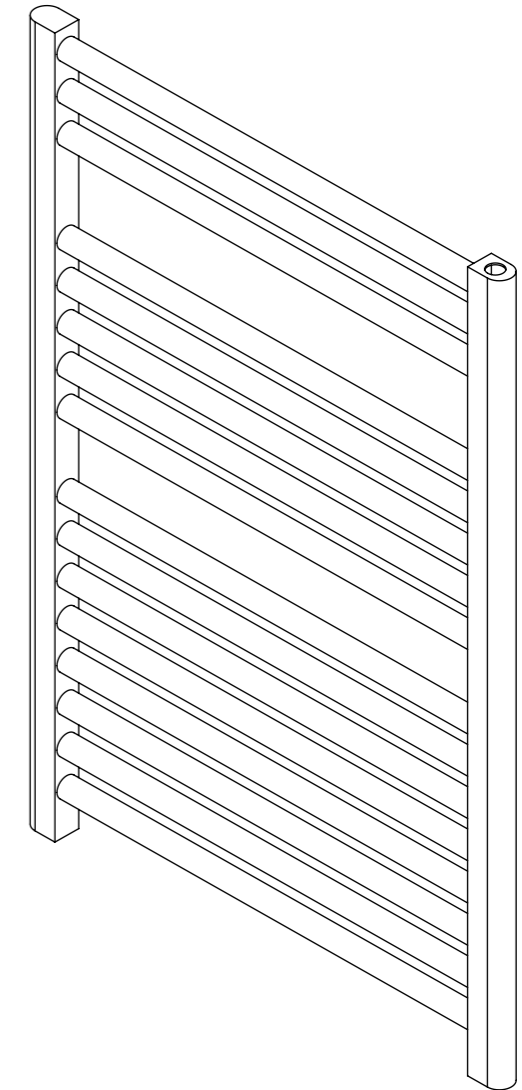
Front View



Side View

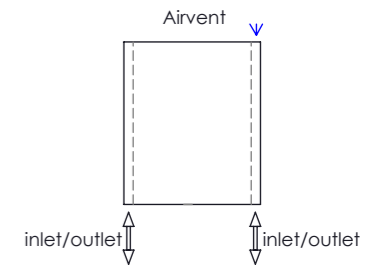


Back View



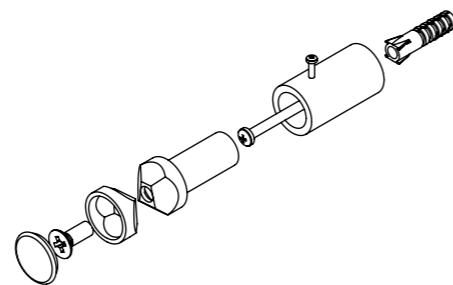
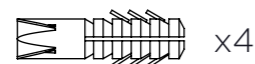
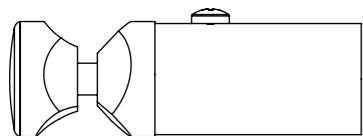
Top View

Plumbing Position:  
Vertical Mount



All Dimension are in mm  
 Max.Working Pressure: 10 Bar  
 Max.Working Temperature: 95° C  
 Inlet / Outlet : 1/2" BSP  
 Fuel: E/H/D  
 Ø25x1.2 mm Hor. Tubes  
 30x40x1.5 mm Vert. Profiles

Installation Accessories:



PRODUCT CODE	HEIGHT (H)	LENGTH (L)	DEPTH (D)	PIPE CENTRES (C)	BRACKET CENTRES	
	mm	mm	mm		F	S
4M9	900	420	30	380	680	240
5M9	900	500	30	460	680	320
6M9	900	600	30	560	680	420