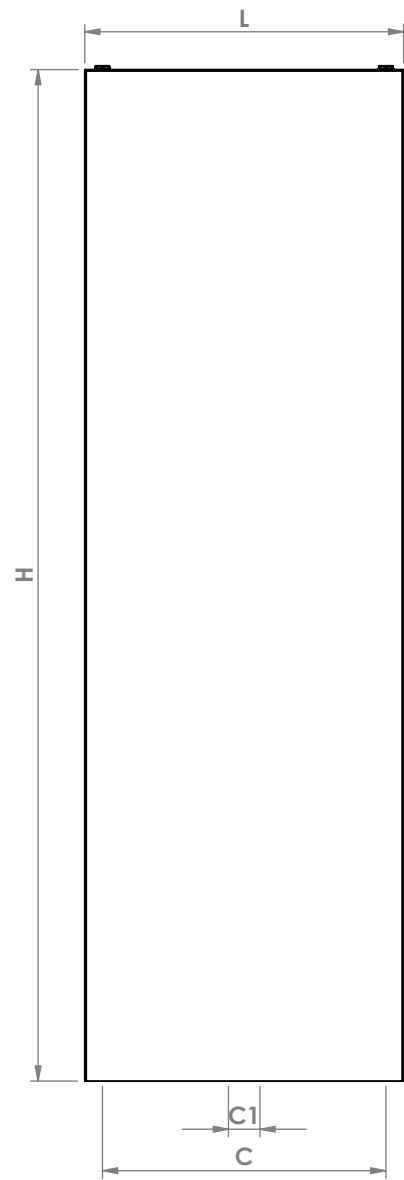
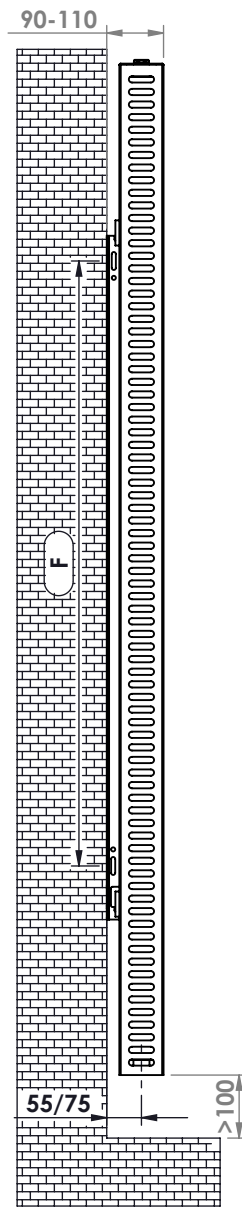


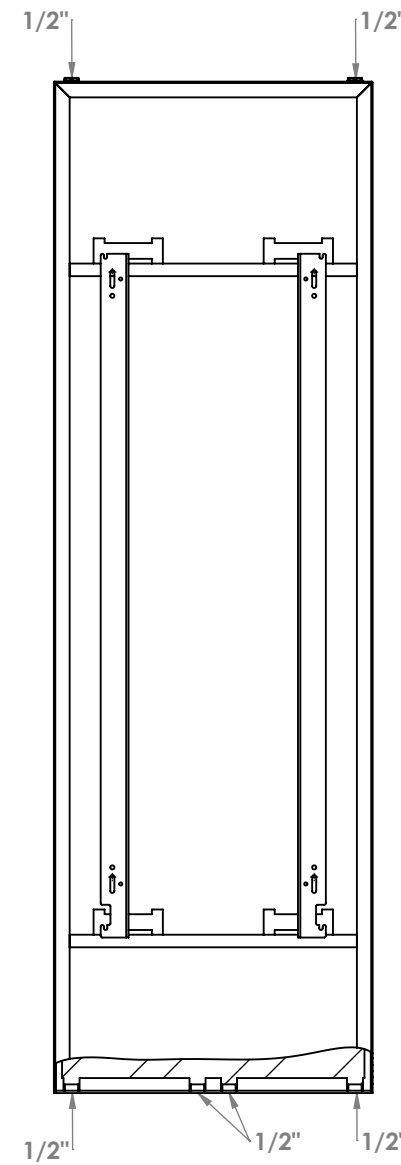
SOVRAN V (Sovran Vertical)



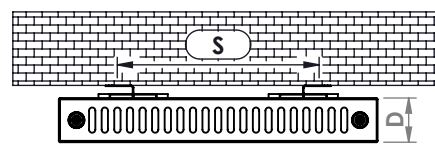
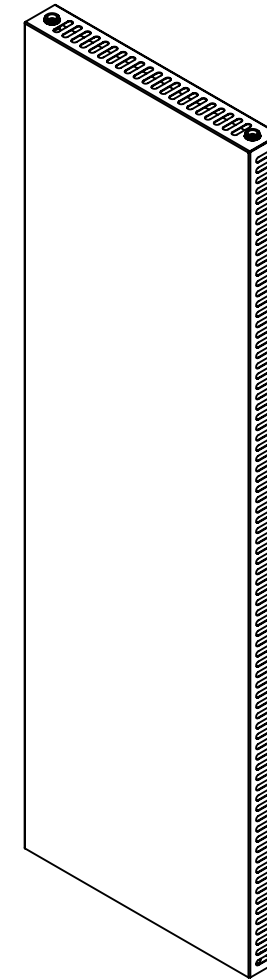
Front View



Side View

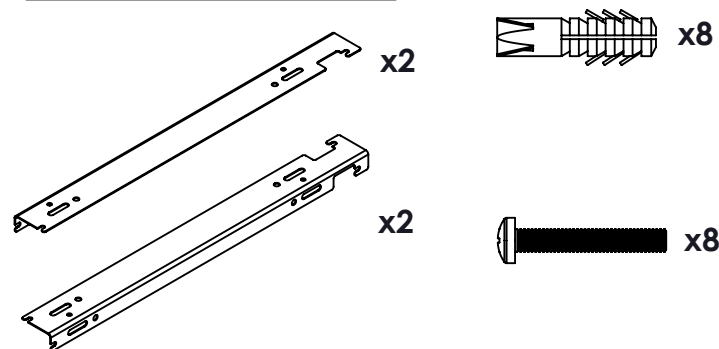


Back View

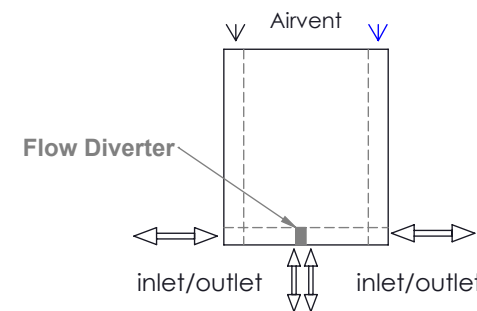


Top View

Installation Accessories:



Plumbing Position: Vertical



When mounting vertically, please observe that the collector fitted with a flow diverter is mounted at the bottom. This can be verified by visually checking or by referring to the installation diagram

Vertical mount
All Dimensions are in mm
Max. Working Pressure: 10 Bar
Max. Working Temperature: 95° C
Inlet / Outlet : 1/2" BSP
Fuel : H

PRODUCT CODE	Height	Length	Depth	Pipe Centres	Bracket Centres	
	H mm	L mm	D mm	C1-C mm	F mm	S mm
<i>Sovran Double</i>						
SOVD164v	1600	400	72	50-350	960	240
SOVD165v	1600	500	72	50-450	960	340
SOVD166v	1600	600	72	50-550	960	440
SOVD167v	1600	700	72	50-650	960	540
SOVD182v	1800	200	72	50-150	1160	110
SOVD183v	1800	300	72	50-250	1160	140
SOVD184v	1800	400	72	50-350	1160	240
SOVD185v	1800	500	72	50-450	1160	340
SOVD186v	1800	600	72	50-550	1160	440
SOVD187v	1800	700	72	50-650	1160	540
SOVD202v	2000	200	72	50-150	1360	110
SOVD203v	2000	300	72	50-250	1360	140
SOVD204v	2000	400	72	50-350	1360	240
SOVD205v	2000	500	72	50-450	1360	340
SOVD206v	2000	600	72	50-550	1360	440
SOVD207v	2000	700	72	50-650	1360	540
<i>Sovran Single</i>						
SOVS185v	1800	500	52	50-450	1160	340
SOVS186v	1800	600	52	50-550	1160	440
SOVS187v	1800	700	52	50-650	1160	540
SOVS204v	2000	400	52	50-350	1360	240
SOVS205v	2000	500	52	50-450	1360	340
SOVS206v	2000	600	52	50-550	1360	440
SOVS207v	2000	700	52	50-650	1360	540