



Spa luxury for all

A square tubular ladder rail with room to warm plenty of fluffy towels. Create a hotel experience at home – it just might be difficult to leave afterwards!

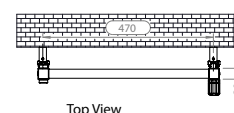
MODEL SHOWN: LEFT: 5K10C BELOW: 5K17C



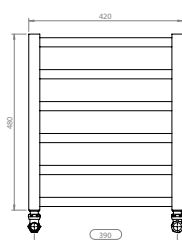
KARNAK

RAL 9016 C 10 95°C C V 5 YEARS
 WHITE CHROME WORKING PRESSURE WORKING TEMP. CLOSED SYSTEM MOUNT POS. WARRANTY

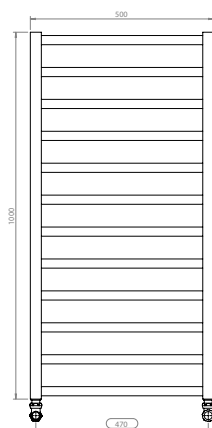
Product Name	Height mm	Length mm	Depth mm	Pipe Centres mm	Wall to Pipe Centre mm	Wall to Face mm	Water Content lt	Gross Weight kg	Fuel Options E/H/D	Towel Gaps	Heat Output ΔT 50		Finish	
											BTU	Watts	White W	Chrome C
3K10	1000	310	30	280	70-85	85-100	2.6	5.6	E/H/D	11	678	198		✓
3K14	1440	310	30	280	70-85	85-100	3.7	7.9	E/H/D	16	960	281		✓
4K5	480	420	30	390	70-85	85-100	1.8	4.2	E/H/D	5	495	145	✓	✓
4K14	1440	420	30	390	70-85	85-100	5.0	10.8	E/H/D	16	1096	321	✓	✓
5K10	1000	500	30	470	70-85	85-100	4.1	9.0	E/H/D	11	1124	329	✓	✓
5K14	1440	500	30	470	70-85	85-100	5.9	12.8	E/H/D	16	1246	365	✓	✓
5K17	1700	500	30	470	70-85	85-100	7.0	14.9	E/H/D	19	1882	551	✓	✓



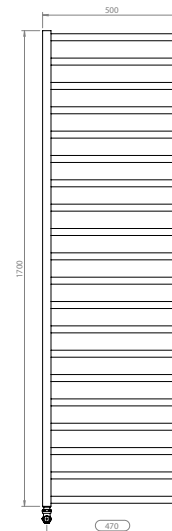
Top View



Front View: 4K5



Front View: 5K10



Front View: 5K17